

# Utility Engineering

*Trusted experts in water, sewer and storm utility engineering*

## ► Predict. Prioritize. Prepare. Prevent.

Our Utility Engineering experience includes water, sewer and storm infrastructure design and construction inspections services. Our project scope experience ranges from small (less than \$100,000 in construction costs) to large, multimillion-dollar projects.

In the recent past, Meshek provided civil design and construction inspection services for the R.L. Jones Airport for improvements totaling nearly \$7 million. The project included the construction of a 78-inch storm sewer main, complete with a new outfall to the Arkansas River. This work required the replacement and/or relocation of several existing utilities.

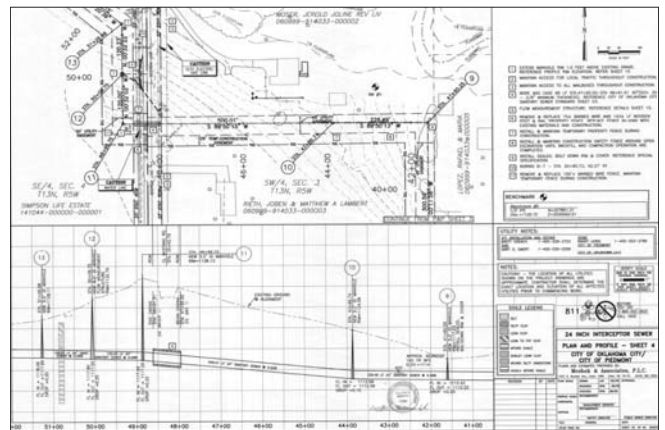
Additionally, we have recently completed the design of over 2 miles of 24-inch diameter sewer and nearly 1/2 mile of force-main totaling nearly \$2.5 million. The new system will enable the transport of wastewater from the City of Piedmont to Oklahoma City for treatment. The project required coordination with regulatory and funding agencies and necessitated coordination with municipal and private utility companies across jurisdictional and service boundaries.

For the City of Tulsa, Oklahoma, we have designed countless utility relocation projects. Most recently, Meshek was contracted to serve as the design engineer for the Olympia Medical Park. This project required the design and construction of one mile of sewer (ranging in diameter from 24 to 8 inches) and 1,500 linear feet of 8-inch waterline.

Lastly, for the City of Bixby, Oklahoma, the Meshek team recently designed over 2 miles of waterline ranging in diameter from 8 to 12 inches. The work included coordination with multiple land owners and utility services to enable the cost-effective and timely construction of much needed system upgrades.



*Above: Construction projects at R.L. Jones Jr. Airport in Tulsa, Oklahoma. Jones is one of the busiest general aviation airports in the United States. Below: Piedmont Sewer Project construction documents. Work required coordination with numerous government and utility agencies.*



*Meshek offers over 20 years of experience in the design and construction of municipal utilities. Our team of engineers is complimented by trained right-of-way and certified surveying professionals able and ready to assist at every facet of your utility project.*

Providing specialized hydrology and hydraulic modeling, engineering design, construction inspection services, roadway and utility design, advanced GIS services for stormwater management, municipal GIS asset/utility mapping and more to communities and clients for more than twenty years.

Tulsa: Ph 918.392.5620

Online: [www.meshekengr.com](http://www.meshekengr.com)



CIVIL & WATER RESOURCE ENGINEERING  
GEOGRAPHIC INFORMATION SYSTEMS