

Professional Land Surveying

Over 20 years of experience in Land Surveying

► Predict. Prioritize. Prepare. Prevent.

Meshek & Associates, PLC, is committed to providing high quality land surveying and geographic information systems services to our clients. We employ cutting-edge technology and expertly trained personnel to deliver efficient, reliable surveying services. Our list of clients include many municipal and state government agencies in Oklahoma and Texas, including the Oklahoma Department of Transportation.

Our field crew employs state of the art field equipment such as Topcon total station, Topcon and Carlson data collectors and Topcon Hiper GA RTK GPS system with a radio repeater unit to extend radio transmission range of the base station. We also use the latest software technologies - AutoCAD along with Softdesk's Land Development Desktop software - to ensure accuracy and reduce office time.

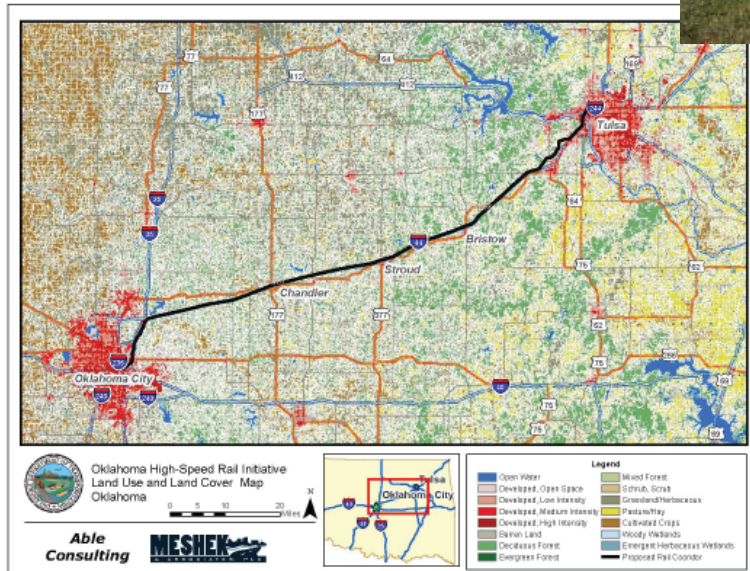
For your sub-meter mapping and surveying needs, we locate boundaries and inventory field features in a fraction of the time with our Trimble Pathfinder receivers. This field data may then be used to generate your customized GIS project via ESRI software products.

Our diversified staff includes Professional Land Surveyors, Certified Floodplain Surveyors, Certified GISP's and Professional Civil Engineers. Our field personnel, trained in detail data collection, work with a data collection library prepared in coordination with our office survey and GIS technicians. This proven methodology enables the processing of field data remarkably fast and allows our field crew to become the eyes of the designers and GIS specialists.

In today's complex setting, count on Meshek to provide you with the best of both knowledge and talent - ready and able to meet the demands and challenges of the industry.



Above & Below: Surveying conducted for the Oklahoma Department of Transportation for Construction Drawings and Environmental Studies of future transportation projects.



Providing specialized hydrology and hydraulic modeling, engineering design, construction management services, roadway and utility design, surveying, advanced GIS services for stormwater management, municipal GIS asset/utility mapping and more to communities and clients for more than twenty years.

Tulsa: Ph 918.392.5620

Online: www.meshekengr.com



CIVIL & WATER RESOURCE ENGINEERING
GEOGRAPHIC INFORMATION SYSTEMS