

# Advanced GIS Services

Trusted experts in GIS development, applications and implementation

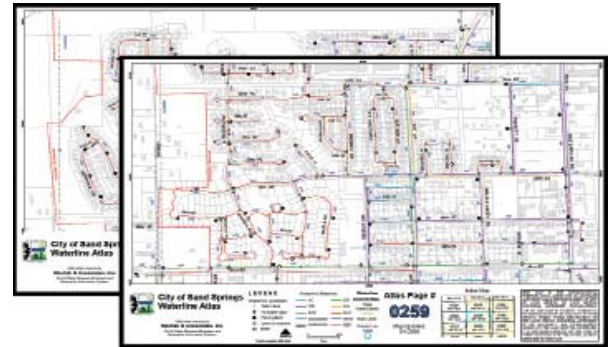
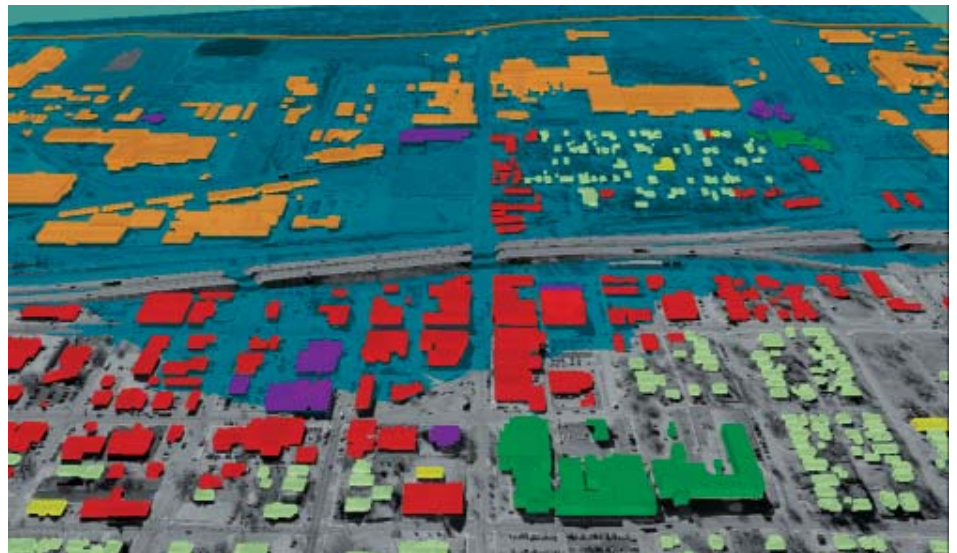
## ► Predict. Prioritize. Prepare. Prevent.

With almost a decade of experience in Geographic Information Systems (GIS) development, Meshek & Associates, PLC operates a full scale GIS service department specializing in geodatabase and data development; capturing, storing, analyzing and managing data and associated attributes which are spatially referenced to the Earth; customized scripting application tools, data visualization and cartography.

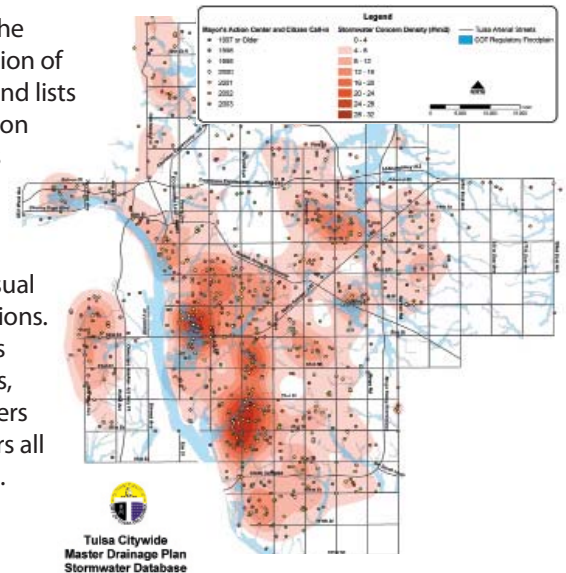
At Meshek & Associates, we create custom GIS solutions tailored to our client's needs and help clients convert existing libraries of data, maps and reports into an integrated GIS. Areas we've worked extensively within include utility mapping, needs assessments, emergency operations / hazard mitigation, floodplain determinations, FEMA initiatives and internet mapping capabilities.

We stand behind our proven track record for GIS design and implementation. Specializing in the designing, development and application of GIS data solutions for government and corporate clients, Meshek & Associates is committed to exceeding client expectations on every project and to meeting project goals on-time and on-budget.

GIS provides a medium to test different disaster scenarios for hazard mitigation. For example, many buildings, including important city buildings, many industries and some residences, would be underwater during this flood event projection. Knowing the possibilities helps cities plan to prevent and mitigate damage and consequences. Explore multiple solutions modeled with GIS.



GIS allows the transformation of databases and lists of information or drawings and plans into usable, searchable, reliable visual representations. GIS changes how citizens, civil engineers and planners all look at data.



Providing specialized hydrology and hydraulic modeling, engineering design, construction management services, roadway and utility design, advanced GIS services for stormwater management, municipal GIS asset/utility mapping and more to communities and clients for more than twenty years.

Tulsa: Ph 918.392.5620  
Online: [www.meshekengr.com](http://www.meshekengr.com)



CIVIL & WATER RESOURCE ENGINEERING  
GEOGRAPHIC INFORMATION SYSTEMS